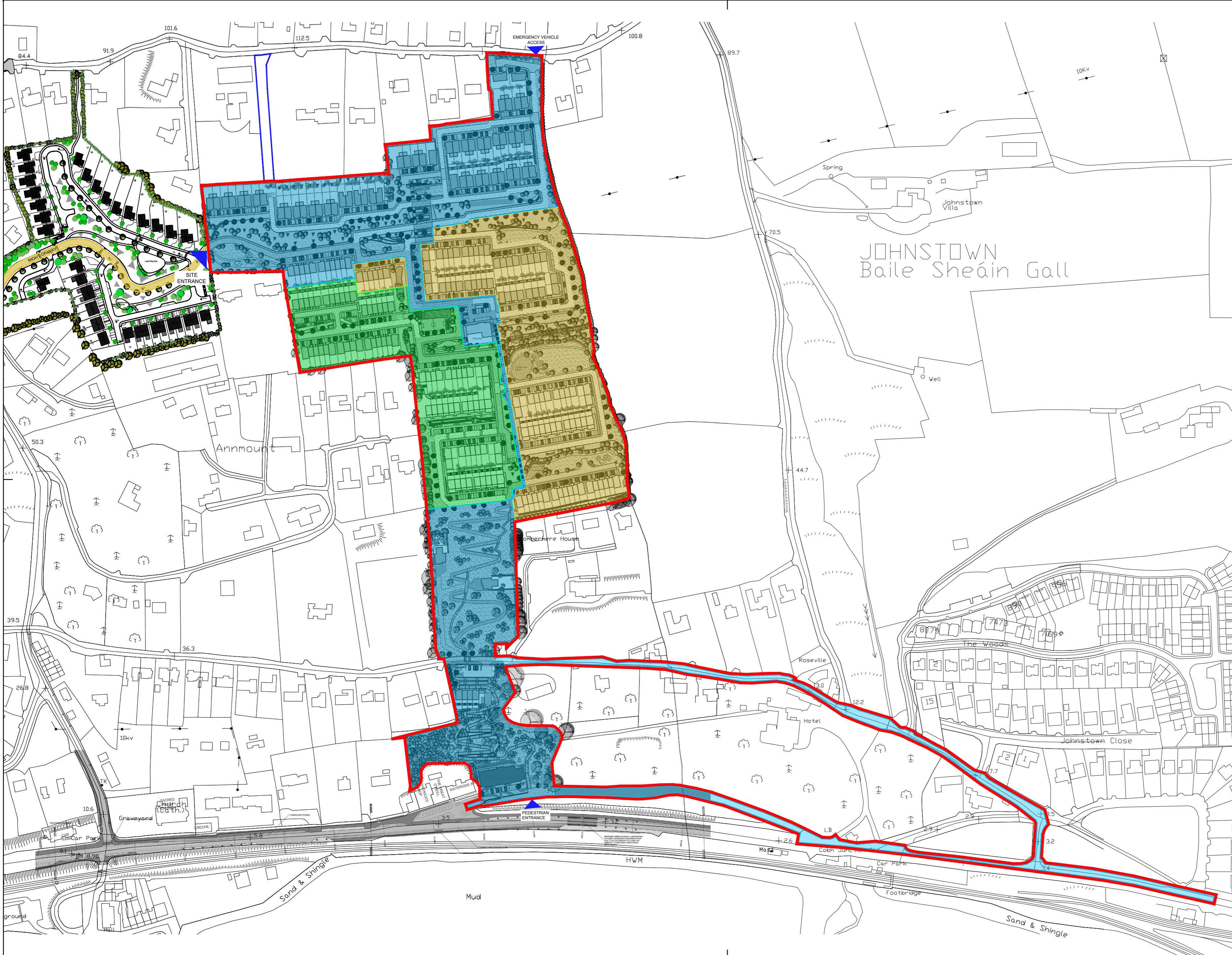
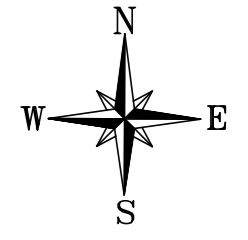


DO NOT SCALE. WORK TO FIGURED DIMENSIONS ONLY.
 ALL EXISTING DIMENSIONS TO BE CHECKED ON SITE.
 DRAWN ON AUTOCAD R2004 AT DEADY GAHAN ARCHITECTS LTD
 LAYERS ON THIS DRAWING COMPLY WITH BS 1192: PART 5



Phasing Schedule

- Phase 1 - 97no. Units**
 - Phase 1 will also include the following works:
 - The upgrade of the storm and foul sewer network along the Terrace and Johnstown Close
 - Construction of the crèche, community facility & commercial unit
 - The amenity path that connects the northern land parcel to Johnstown Close
- Phase 2 - 93no. Units**
- Phase 3 - 99no. Units**

PROPOSED PHASING STRATEGY
 SCALE 1:2500 @ A2

date	rev	name	chk	note
01.12.21	P1	LM	EJG	ISSUED FOR PLANNING

DEADY GAHAN ARCHITECTS
 EASTGATE VILLAGE, LITTLE ISLAND, CORK
 T: 021 4355016 W: WWW.DGARCHITECTS.IE
 EMAIL: INFO@DGARCHITECTS.IE

Project
 PROPOSED RESIDENTIAL DEVELOPMENT
 AT TOWNLAND OF LACKENROE, GLOUNTHAUNE, CO. CORK

Drawing title PROPOSED PHASING STRATEGY			
Scale 1:2500 @ A2	Drawn LM	Checked EJG	Date 16.06.21
Project No. 20151	Dwg. No. 20151/P/009	Revision P1	
Information / Comments			Tender
Planning			Construction